



Tracking and luminaire:

First trunking rail should have one side connecting plate&last trunking rail with no connecting plate on both sides, then fix the Luminaire to trunking rail then lock holder, then keep end caps at both sides.



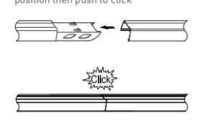
Step 1 Mounting Suspension



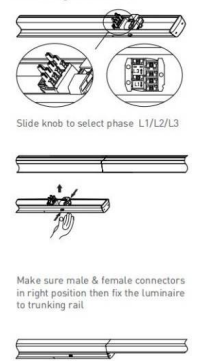
Step 2 Connecting Power Supply



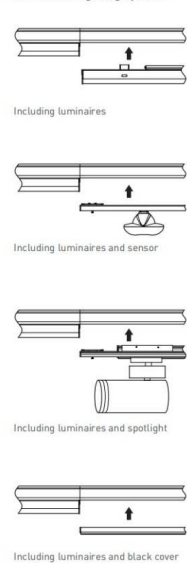
Step 3 Connecting Trunking Rail



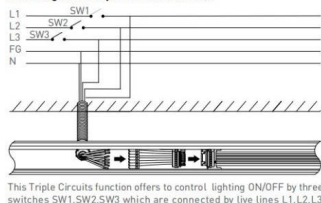
Step 4 Mounting Luminaire



Step 5 LED linear lighting system

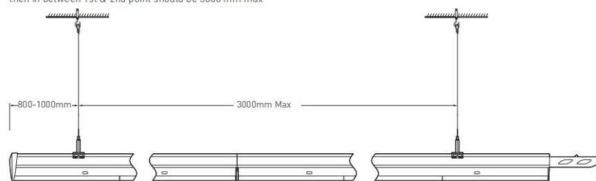


Wire diagram of triple circuits function



Pendant and mounting installation

Starting Installation distances point should be 800 mm to 1000 mm, then in between 1st & 2nd point should be 3000 mm max



Four options for installation



Safety notes:
Installation should be performed only by
qualified electrician .

- Make sure no voltage while installation .
- Connect cable wires according to wire labeling.
- Max current should not exceed 16A in one power feed in circuit.



LED linear lighting System composition

Terminal module:

Terminal module can be independently installed as
a single unit, it also can be connected at end of one
linear light row.



- 1 Trunking Rail
- 2 Power cable feed in hole
- 3 Luminaire
- 4 Driver
- 5 Lock holder
- 6 End cap
- 7 Male connector
- 8 Female connector
- 9 Installation cord
- 10

